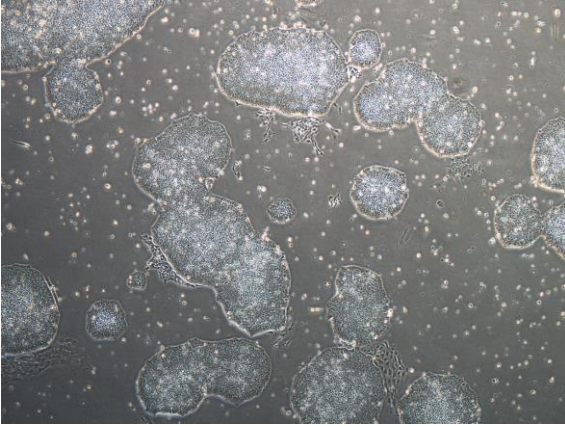
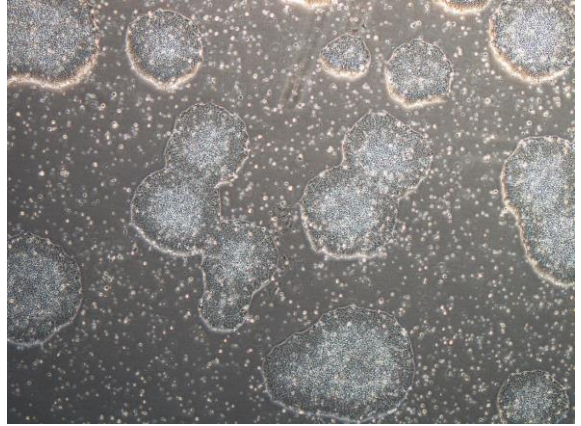


【 CiRA-j-1015 】 Morphology of iPSC colonies

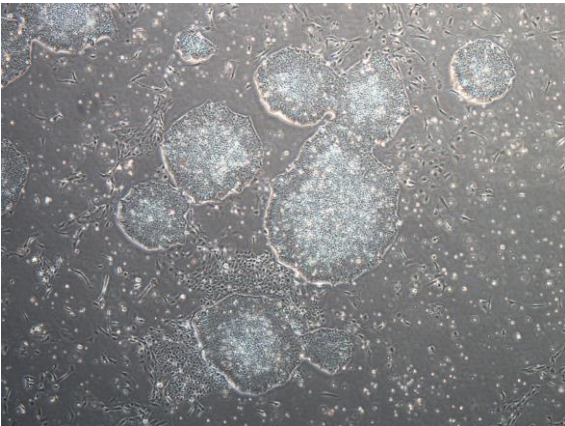
CiRA-j-1015-A: passage-2



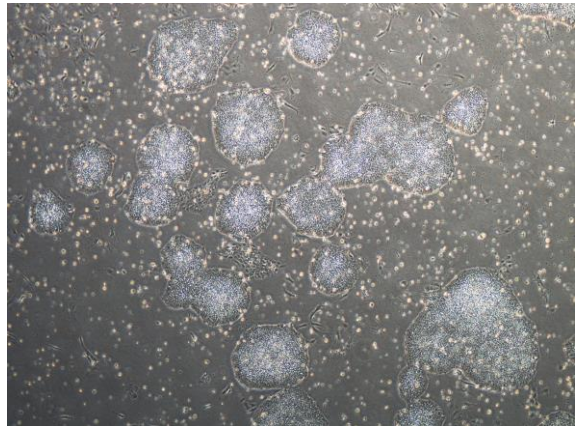
CiRA-j-1015-B: passage-2



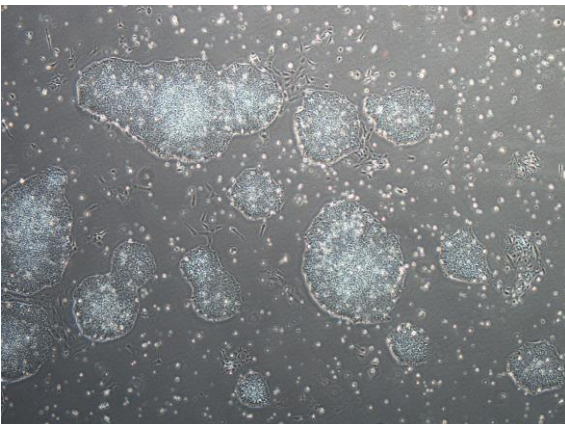
CiRA-j-1015-C: passage-2



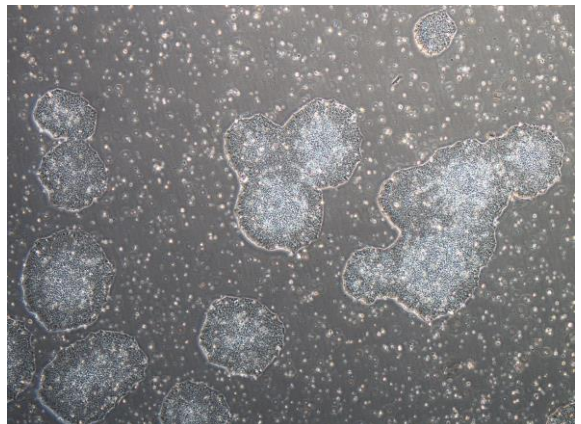
CiRA-j-1015-D: passage-2



CiRA-j-1015-E: passage-2



CiRA-j-1015-F: passage-2



(All images were captured at 4x magnification)